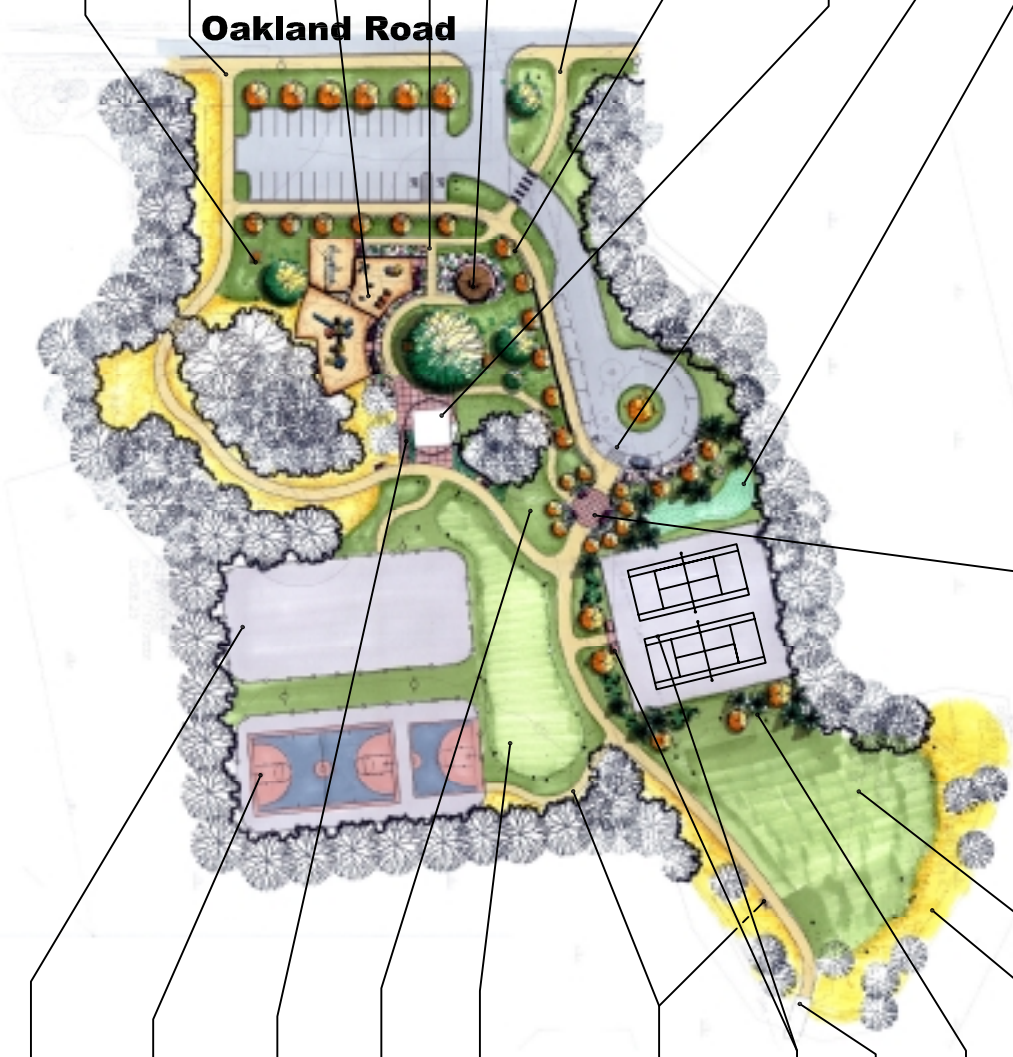


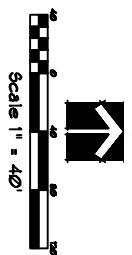
Master Plan

Controlled Pedestrian Park Entry
With Seating & Flower Gardens

- Infiltration / Rain Garden
- Redesign Of Existing Parking Area (Includes Turnaround/ Drop-off Area)
- Existing Park Building With Restrooms & Warming House
- Ornamental Fencing Around Parking Areas
- Asphalt Trail Connection From North
- Picnic Shelter On Hillside
- Accessible Trail To Park Building
- Children's Play Areas Built On Varying Levels Into Hillside
- Asphalt Trail Connection From South
- Scattered Picnic Tables



- Open Lawn Area
- Naturalize Edges Of The Wet Areas
- Vegetative Buffers / Screening
- Existing Pedestrian Bridge
- Existing Tennis Courts To Remain With Added Seating Area
- Asphalt Trail w/Seating - Provides Access To Amenities & Larger Trail Systems
- Informal Skating Area/ Hockey Rink Access
- Blend Hillside Out & Open Up Views
- Create Plazas Around Existing Building, Improve Stairway & Open Up Views
- Pave Second Rink For Full Size & 1/2 Basketball Courts In Summer
- Existing Paved Hockey Rink



Meadow Park

City of Minnetonka