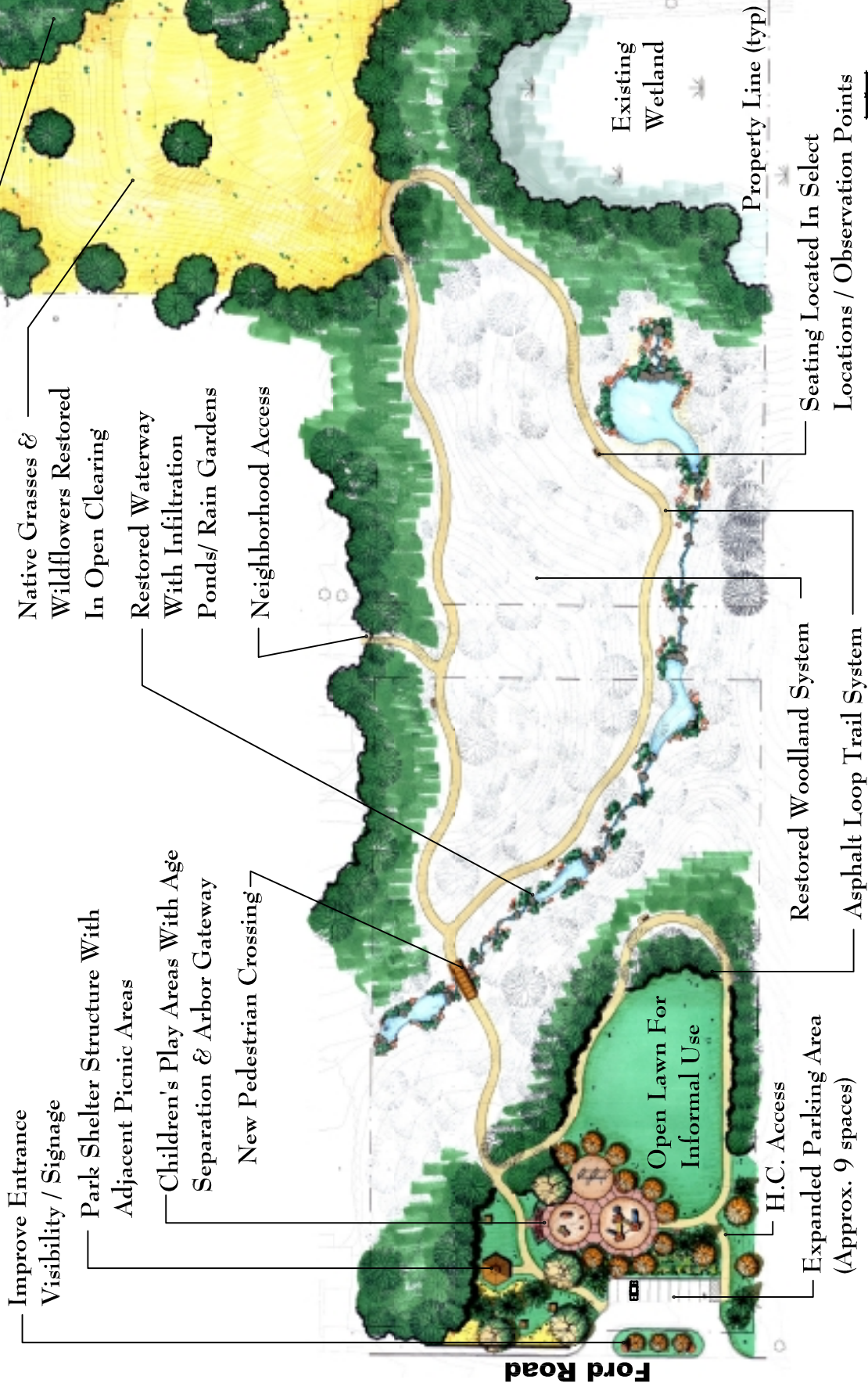


# Master Plan



Vegetative Buffers Along Hwy 169

Native Grasses & Wildflowers Restored In Open Clearing

Restored Waterway With Infiltration Ponds/ Rain Gardens

Neighborhood Access

Improve Entrance Visibility / Signage

Park Shelter Structure With Adjacent Picnic Areas

Children's Play Areas With Age Separation & Arbor Gateway

New Pedestrian Crossing

Existing Wetland

Property Line (typ)

Seating Located In Select Locations / Observation Points

Restored Woodland System

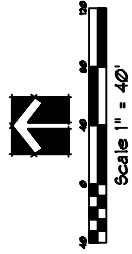
Asphalt Loop Trail System

Open Lawn For Informal Use

H.C. Access

Expanded Parking Area (Approx. 9 spaces)

Prepared by:  
Brauer & Associates, Ltd.  
10417 Excelsior Boulevard, Suite 1  
Hopkins, MN 55343  
Ph: (952)236-0831  
Fax: (952)236-0833  
Job #: 02-01



# Ford Park

City of Minnetonka