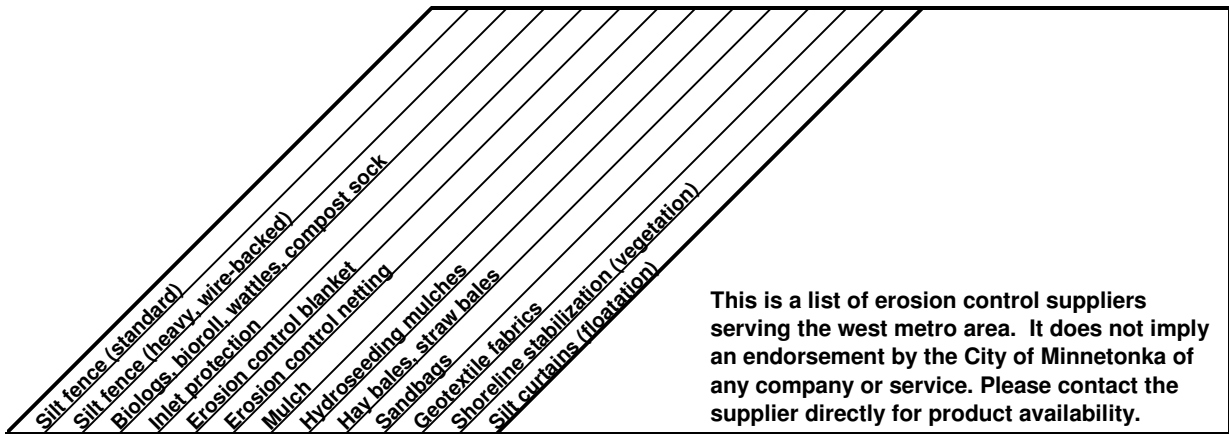


Erosion Control Suppliers

Silt fence (standard)	Silt fence (heavy wire-backed)	Biologs, biotrit, wartyes, compost sock	Inlet protection	Erosion control blanket	Erosion control netting	Mulch	Hydroseeding mulches	Hay bales, straw bales	Sandbags	Geotextile fabrics	Shoreline stabilization (vegetation)	Silt curtains (floatation)	
													American Excelsior Co. (www.amerexcel.com) 15815 Oakhill Road North, Scandia, MN 55073 651-433-4267 Warehouse Location: 140 81st Ave. N.E., Fridley, MN 55432 763-780-5810
													Bennis Feed 'n Fuel 13008 Minnetonka Blvd., Minnetonka, MN 952-935-8890
													Brock-White (www.brockwhite.com) 2575 Kasota Ave., St. Paul, MN 55108 651-647-0950 800-880-3210
													Cottage Grove Compost Site 9600 S. Glendenning Rd., Cottage Grove, MN or 14800 Hwy 16, Shakopee, MN 651-458-1026
													Creekside Soils (Jeff Meehan Sales, Inc.) 9001 E. Bloomington Freeway, Bloomington, MN 55420 612-788-4757
													Davies/Northern Water Works Supply 4124 83rd Ave. N., Brooklyn Park, MN 55443 763-560-5200 800-844-8334
													Doehling's Farm Market 16209 Hwy 7, Minnetonka, MN 320-328-4307
													Geo-Synthetics, Inc. (www.geosynthetics.com) 428 North Pewaukee Road, Waukesha, WI 53188 262-524-7979 800-444-5523
													Halla Nursery, Inc. (www.hallanursery.com) 10000 Great Plains Blvd., Chanhassen, MN 55318 952-445-6555
													Hild & Associates (www.hildnatives.com) 326 South Glover Road, River Falls, WI 54022 715-426-5131 800-790-9495
													Home Depot (www.homedepot.com) 13100 Valley View Rd, Eden Prairie, MN 55344 952-949-0982 - or - 1705 Annapolis Ln. N., Plymouth, MN 763-509-9590

This is a list of erosion control suppliers serving the west metro area. It does not imply an endorsement by the City of Minnetonka of any company or service. Please contact the supplier directly for product availability.



This is a list of erosion control suppliers serving the west metro area. It does not imply an endorsement by the City of Minnetonka of any company or service. Please contact the supplier directly for product availability.

Silt fence (standard)	Silt fence (heavy wire-backed)	Biologs, bioroll, wattles, compost sock	Inlet protection	Erosion control blanket	Erosion control netting	Mulch	Hydroseeding mulches	Hay bales, straw bales	Sandbags	Geotextile fabrics	Shoreline stabilization (vegetation)	Silt curtains (floatation)	Supplier
													Hopkins Compost Site 3100 Hopkins Crossroad, Hopkins, MN 952-939-1382 (Hopkins Public Works Dept.)
													Innovative Landscape Supply 721 Ladybird Ln., Burnsville, MN 952-894-6550
													Jackson Landscape Supply, Inc. 10906 162nd St. West, Lakeville, MN 55044 612-435-6927 800-435-6927
													Menard's (www.menards.com) 6800 Wayzata Blvd., Golden Valley, MN 763-525-5561 12600 Plaza Dr., Eden Prairie, MN 952-946-5380
													Otten Bros. Nursery and Landscaping 2350 W. Wayzata Blvd., Orono, MN 952-473-5425
													ParTek Supply 2471 Galpin Court, Suite 122, Chanhassen, MN 952-466-5828; fax 952-466-5825
													Pautz Construction Services Inc. (www.curb-log.com) 20855 Mushtown Road, Prior Lake, MN 55372 952-447-1299; fax 952.440-1299
													Prairie Restorations, Inc. (www.prairieresto.com) P.O. Box 327, Princeton, MN 55371 612-389-1314
													Scherer Brothers Lumber Company (www.schererbros.com) 330 11th Ave S, Hopkins, MN 55343 952-938-2741
													SMC Compost Services 805 Yankee Doodle Rd., Eagan, MN 651-683-9020 15325 Babcock Ave., Rosemount, MN 651-322-2622
													Spectrum Sales 6125 Bacon Ave. East, Inver Grove Heights, MN 55077 651-552-8617
													Twin City Pallet 139 Grand Ave. E., South St. Paul, MN 651-450-1952
													Twin City Seed Co. (www.intlseed.com) 7265 Washington Ave. S., Edina, MN 55439 952-944-7105 800-545-8873
													Windscapes (www.mulchtruck.com; www.filtrexx.com) 1848 E. 50th St., Inver Grove Hts., MN 651-455-3993

Erosion Control Installers/Estimators

Baumann & Son
10985 Little Avenue, Cologne, MN 55322
Brett Baumann Office/fax 952-466-2724; cell 612-751-7806

Construction Debris Management
W11340 - 740th Ave, Prescott, WI 54021
Kevin Peterson 612-919-0705; office 715-425-6669

Erosion Control Services, Inc. (www.siltfencemn.com)
19600 Tamarack Street NW, Oak Grove, MN 55011
Bob Hughes 612-701-5552 (cell); 763-413-0304; fax 763-413-2889

Erosion Plus Inc.
3101 W. 220th Street, Jordan, MN 55352
612-369-1075

Erosion Works Inc. (erosionworks@msn.com)
18140 Zane Street, Suite 250, Elk River, MN 55330
Brian Davis 612-282-4080 (cell); 763-262-7458 (SILT); fax 763-712-1851

Heikes Farms
19740 Kenrick Ave., Lakeville, MN 55044
Bob Thompson, Customer Service; Todd Larson, Estimator; 952-469-4755

Metro Erosion, Inc.
12650 Zenith Ave. S., Burnsville, MN 55337.
Kathy Sanders 952-894-1916

Neaton Brothers Erosion Control (www.neatonbrothers.com)
3480 County Road 21, Mayer MN 55360
Chris 612-508-3141 (cell); 952-955-2412; fax 952-955-3582

Pautz Construction Services Inc. (www.curb-log.com)
20855 Mushtown Road, Prior Lake, MN 55372
952-447-1299; fax 952.440-1299

Premier Services, LLC
1301 S. Concord St., South St. Paul, MN 55075
Kathy Christensen, 651-451-2388

Windscapes (www.wincolandscape.com)
1848 E. 50th St., Inver Grove Heights, MN
651-455-3993

Erosion Control Installation Equipment

Devon Distributing Corp. (silt fence installation equipment)
3718 SW Court Ave., Ankeny, IA 50021
515-964-1267 800-965-4665

Contact your local rental store for trenching and seeding equipment.

If you need additional information about erosion control or have a comment regarding these listings, please contact the Minnetonka Natural Resource Division at 952.988.8422.