



**EGG MASS**  
500+ EGGS



**LARVA**  
FEEDS 5-6 WEEKS



**PUPA**  
2 WEEKS



**ADULT FEMALE**  
SHOWN WITH EGG MASS



**ADULT MALE**  
FLYS IN DAYLIGHT

### WHAT IS GYPSY MOTH?

The gypsy moth is a leaf-eating insect belonging to the butterfly family. It was imported from Europe in an attempt to breed a hardier silk worm. Instead, the caterpillars escaped and headed for the trees. Leaving its natural enemies in Europe and armed with an ability to feed and survive on over 300 different tree and woody plant species it was soon chomping its way into the eastern forests. It now ranks as one of the most destructive overall pest of trees and shrubs in the U.S.

**Bottom line:** gypsy moths cause stress and even kill trees and can be a terrible nuisance to people wherever they get established.

### WHY IS IT CALLED “GYPSY” MOTH?

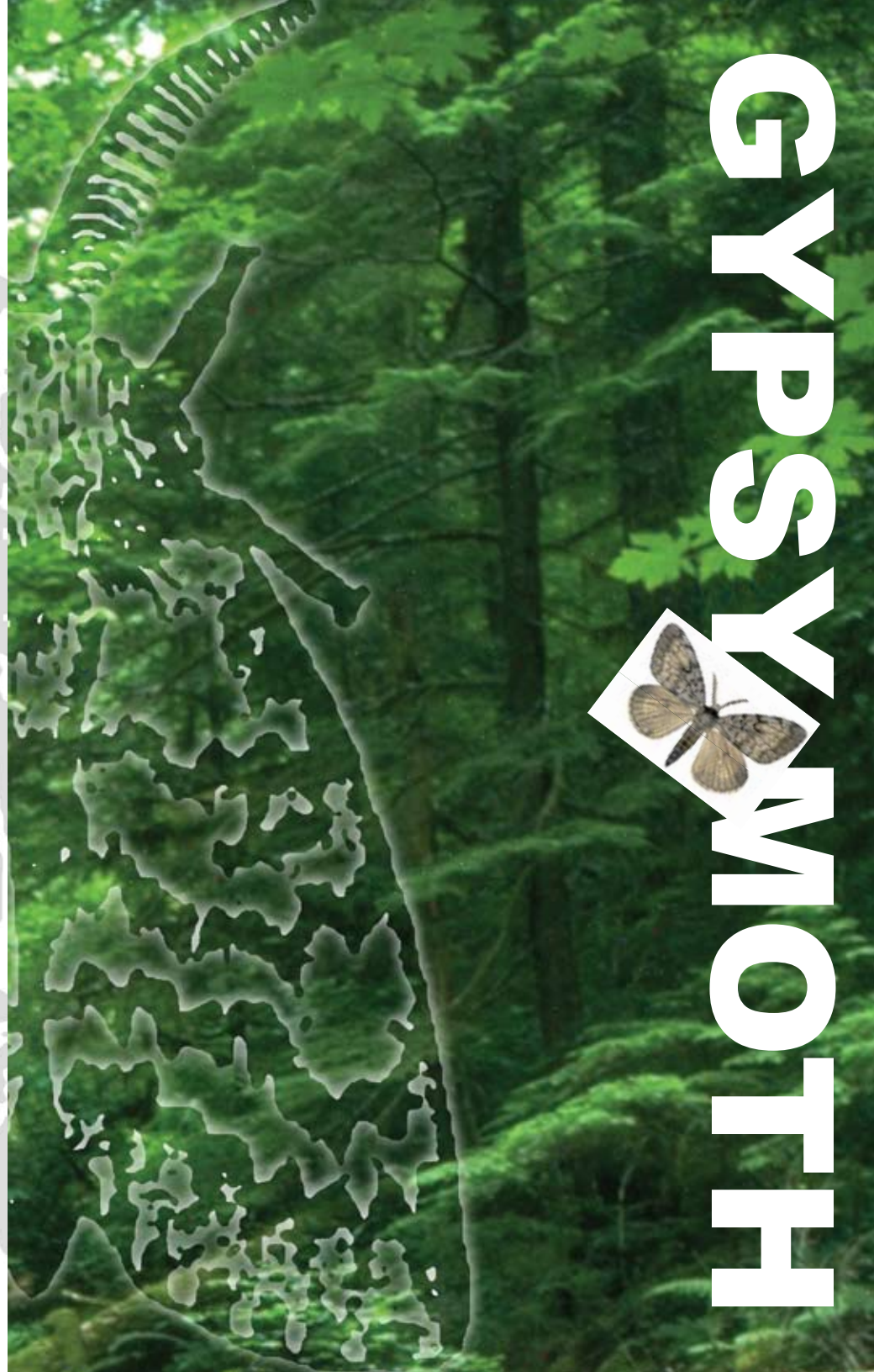
Female moths which cannot fly have the habit of depositing their eggs on objects near the trees on which they were feeding as caterpillars. These objects might be picnic tables, fender wells, grills; in short any outdoor household article. When these objects are moved from infested to noninfested areas, gypsy moth eggs ‘hitch hike” along. Because such movement can be stopped by removing these relatively large egg masses, the U.S. Department of Agriculture put all such articles which might harbor egg masses under Federal Quarantine. All outdoor household articles must be inspected and any egg masses destroyed before moving to noninfested areas. The quarantine has helped slow the spread but some moths evade inspection, hidden on uninspected vans and trailers. To date, Minnesota has treated over 50 start-up populations most of which were traceable to human movement or transportation.

### IS GYPSY MOTH IN MINNESOTA?

Gypsy moth is not known to be established in Minnesota. Each year the Minnesota Department of Agriculture sets over 25,000 pheromone (female scent) traps designed to lure male moths to the trap. This is an extremely effective method of finding small and otherwise undetectable start-up gypsy moth populations.



In accordance with the Americans With Disabilities Act, an alternate form of communication is available upon request.  
TTY:1-800/627-3529



# GYPSY MOTH

## FINDING GYPSY MOTH

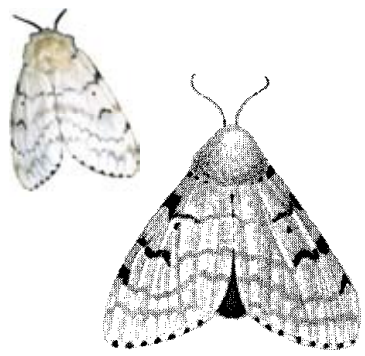
Traps are set on available trees in targeted areas. The traps are lined with a sticky material and baited with female scent to capture the male moths. Traps contain no toxic substances, but they are deadly to male gypsy moths that are lured in and then get stuck. Traps are set in June or July and removed in August or September, depending on the location of the trap within Minnesota.

## HOW YOU CAN HELP

If you find a trap in your yard or neighborhood remember, traps are our best defense against gypsy moth. The trap will not endanger your trees by bringing in gypsy moth. Only male moths are trapped and any positive catches may help us find and destroy a start-up population in your yard or neighborhood before it can cause any damage. Since gypsy moth males look like any other brown moth you might see, you will probably not recognize one. You can help most by making sure that any trap on or near your property is not disturbed. If a trap needs to be moved, please let us know!

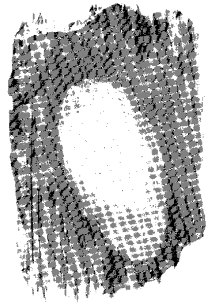
**Other ways you can help.** Outdoor household articles (including vehicles, tents, chairs, etc.) taken to infested states, including Michigan and eastern Wisconsin and used in or near wooded areas during prime gypsy moth egg-laying time (July through early September), could be harboring egg masses! Inspect for egg masses before returning to Minnesota. Remove and discard any egg masses you find.

**You can be a helpful partner in our effort to protect our community trees and forests.** Be informed. Learn as much as you can about gypsy moth. If you suspect you have seen gypsy moth in any life stage, please let us know.



### FEMALE GYPSY MOTH (1X)

Females are heavy and do not fly. They emit a scent (pheromone) that attracts the flying males. Once mated, she lays eggs in a buff colored mass about the size of a quarter.

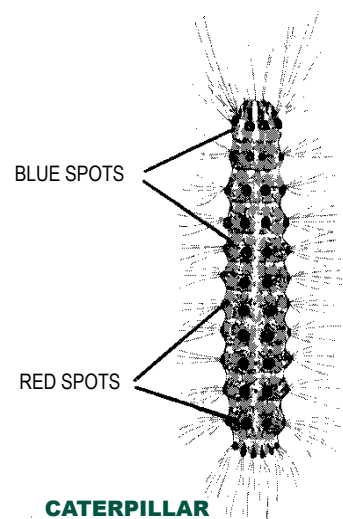


### EGGS

Females plaster the fuzzy, buff colored egg masses onto the base of trees, undersides of branches or any convenient object.

**Note:** Gypsy moths spend most of the year in egg form, ready to hitch hike to new places.

# GYPSY MOTH LIFE STAGES



BLUE SPOTS

RED SPOTS

### CATERPILLAR

This is the only damaging stage. Caterpillars hatch in May, feed for 5 to 6 weeks - day and night as they near pupation. Head is bright yellow and dark brown with pairs of 5 blue and 6 red bumps or spots along the back



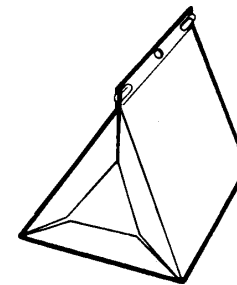
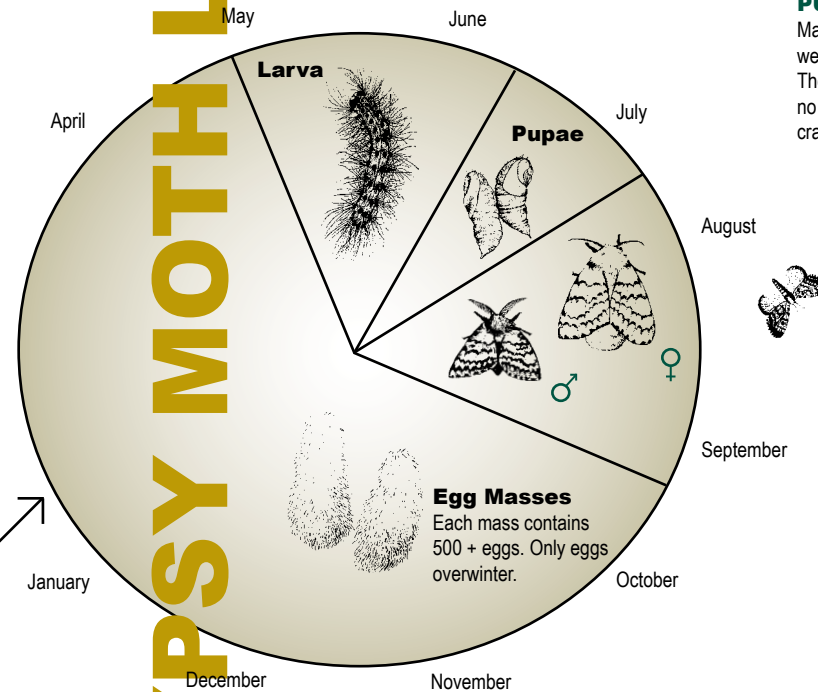
### MALE GYPSY MOTH (1X)

Medium-sized brown moths that fly during the day. Antennae are feathery, wings brown with jagged stripes. Both male and female are short-lived and do not feed.



### PUPA

Mature caterpillars pupate for about 2 weeks, then emerge as adult moths. The dark brown pupae have little or no webbing and are concealed in bark cracks or under debris.



### Gypsy Moth Trap

These triangular, pup tent shaped cardboard traps about 5" by 6" are stapled or tied to trees. They are lined with sticky goo to trap incoming moths and loaded with a powerful sex attractant scent that mimics the scent of a female gypsy moth.

## Q: What Do Gypsy Moths Eat?

**A:** Gypsy moths feed on over 300 species of trees and shrubs. Below is a list of host plants which are most favored by the gypsy moth, those which it will eat if the preferred hosts are unavailable and those which it generally avoids.

**PREFERRED:** Apple, Aspen, Basswood, Birch (gray, paper, river), Boxelder, Hawthorn, Oak, Poplar, Willow

**INTERMEDIATE:** Beech, Birches (other), Buckeye, Cherry, Elm, Hackberry, Hickory, Hornbeam, Larch, Maple, Pine, Spruce

**AVOIDED:** Arborvitae, Ash, Balsam fir, Black walnut, Butternut, Catalpa, Dogwood, Locust (honey & black), Red cedar

## Q: Will I Have To Pay If Gypsy Moth Is Found?

**A:** NO FINES OR COSTS ARE INVOLVED IF A GYPSY MOTH LIFE STAGE IS FOUND. The U.S. and MN Departments of Agriculture will work with local authorities and residents to eradicate this pest as needed.

## Q: What Should I Do If I See Gypsy Moth Life Stages?

**A:** If you suspect that you have found gypsy moth life stages, or you would like more information about gypsy moth in Minnesota, please call the:

**Minnesota Department of Agriculture**

**Gypsy Moth Hotline**

**651-296-MOTH (metro)  
1-888-545-MOTH (greater MN)**

*Please DO NOT remove or destroy any life stages as they should be verified as being gypsy moth by one of the above agency.*

**DON'T MOVE  
GYPSY MOTH**

