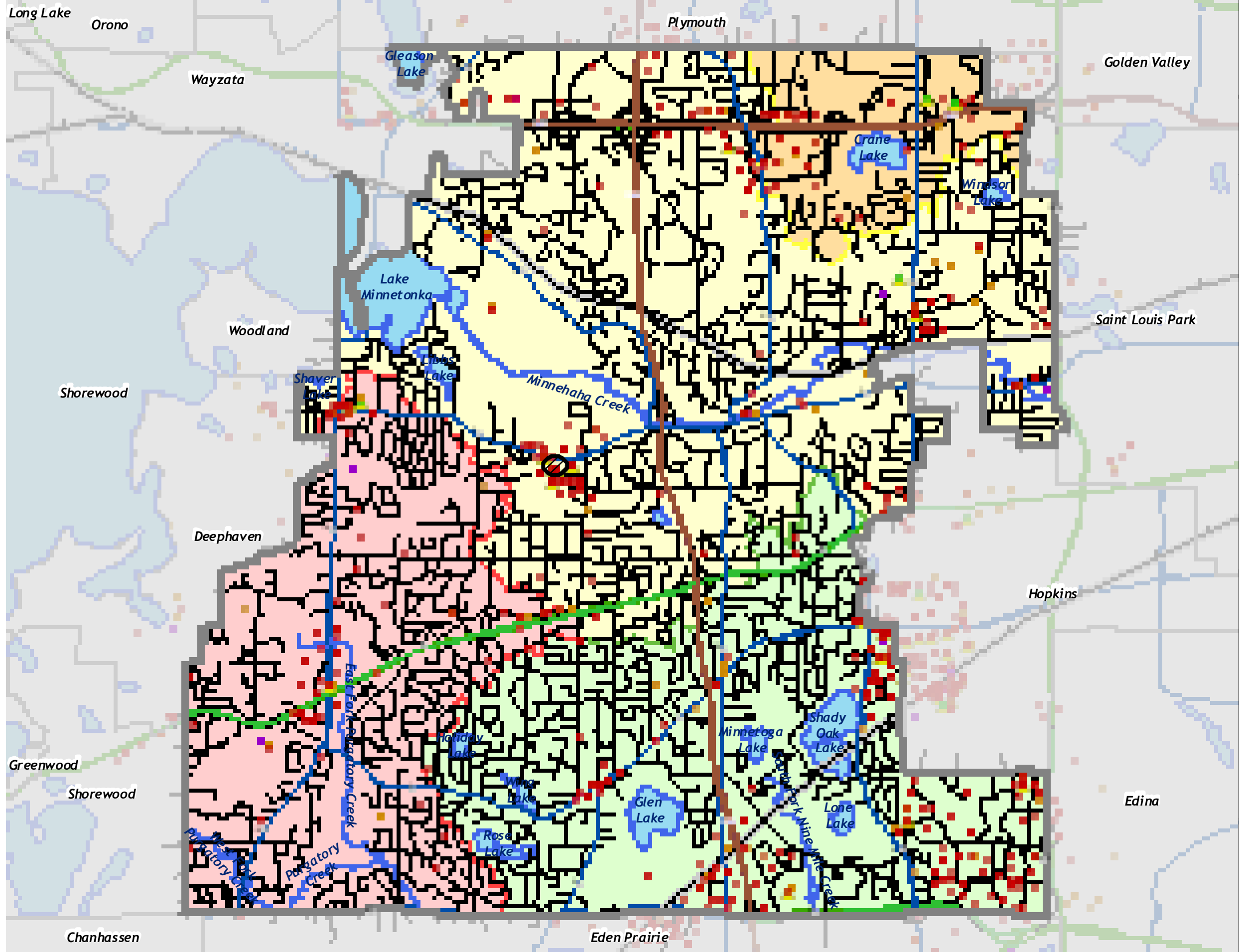
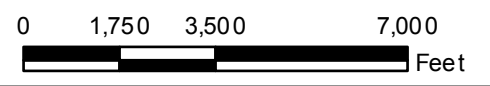
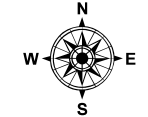


Barr Footer: Date: 12/28/2009 12:25:39 PM File: I:\Client\minnetonka\WR_MP_Up_date_2007\Maps\Figure_3-23\Figure_3-23_Hazardous_Waste_Sites_11x17.mxd User: jpk2



- Hazardous Waste Generators
 - Registered Tank Sites
 - (Petroleum) Leak Sites
 - ▲ VIC Sites
 - Dump Sites
 - Superfund Site
 - Municipal Boundary
 - Interstates (MN/DOT)
 - Trunk Highways (MN/DOT)
 - CSAH (Hennepin County)
 - Local Streets
 - Railroad
 - Lakes & Streams
- Watersheds**
- Bassett Creek
 - Minnehaha Creek
 - Nine Mile Creek
 - Riley-Purgatory-Bluff Creek

Source: Barr Engineering for Watershed Boundary.
Hennepin County for Hazardous Waste Data.
MDNR for Lakes Outside Minnetonka.
MNDOT for Roads Outside Minnetonka.
City of Minnetonka for all other Data.



HAZARDOUS WASTE SITES

Map prepared by: **Barr** Figure 3-23