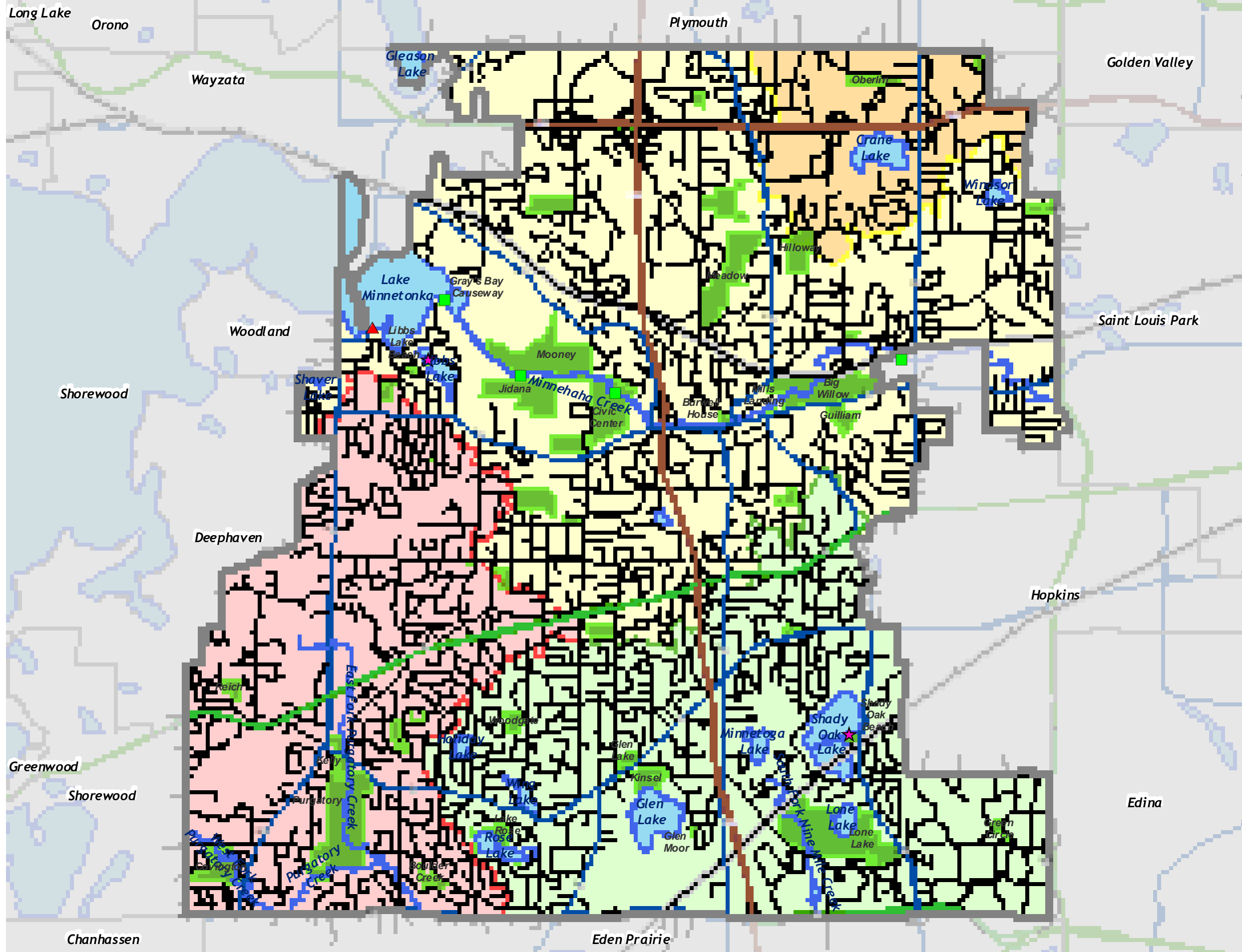


Barr Engineering Date: 12/28/2009 12:22:56 PM File: I:\Client\minnetonka\WR.MP_Updated\Map\Map_2007\Maps\Figures_for_Updated\FINAL_Figures_for_Updated\Figure_Rec_Access_11x17.mxd User: jak2



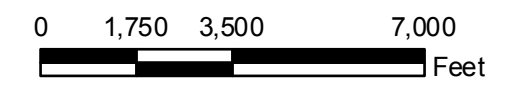
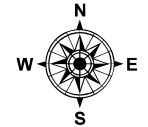
Water Access Locations

- ★ Beach
- ▲ Boat Launch
- Canoe Landing
- City Parks
- Municipal Boundary
- Interstates (MN/DOT)
- Trunk Highways (MN/DOT)
- CSAH (Hennepin County)
- Local Streets
- Railroad
- Lakes & Streams

Watersheds

- Bassett Creek
- Minnehaha Creek
- Nine Mile Creek
- Riley-Purgatory-Bluff Creek

Source: Barr Engineering for Watershed Boundary. MDNR for Lakes Outside Minnetonka. MNDOT for Roads Outside Minnetonka. City of Minnetonka for all other Data.



RECREATION AREAS & PUBLIC ACCESS

Map prepared by:
Barr

Figure 3-22