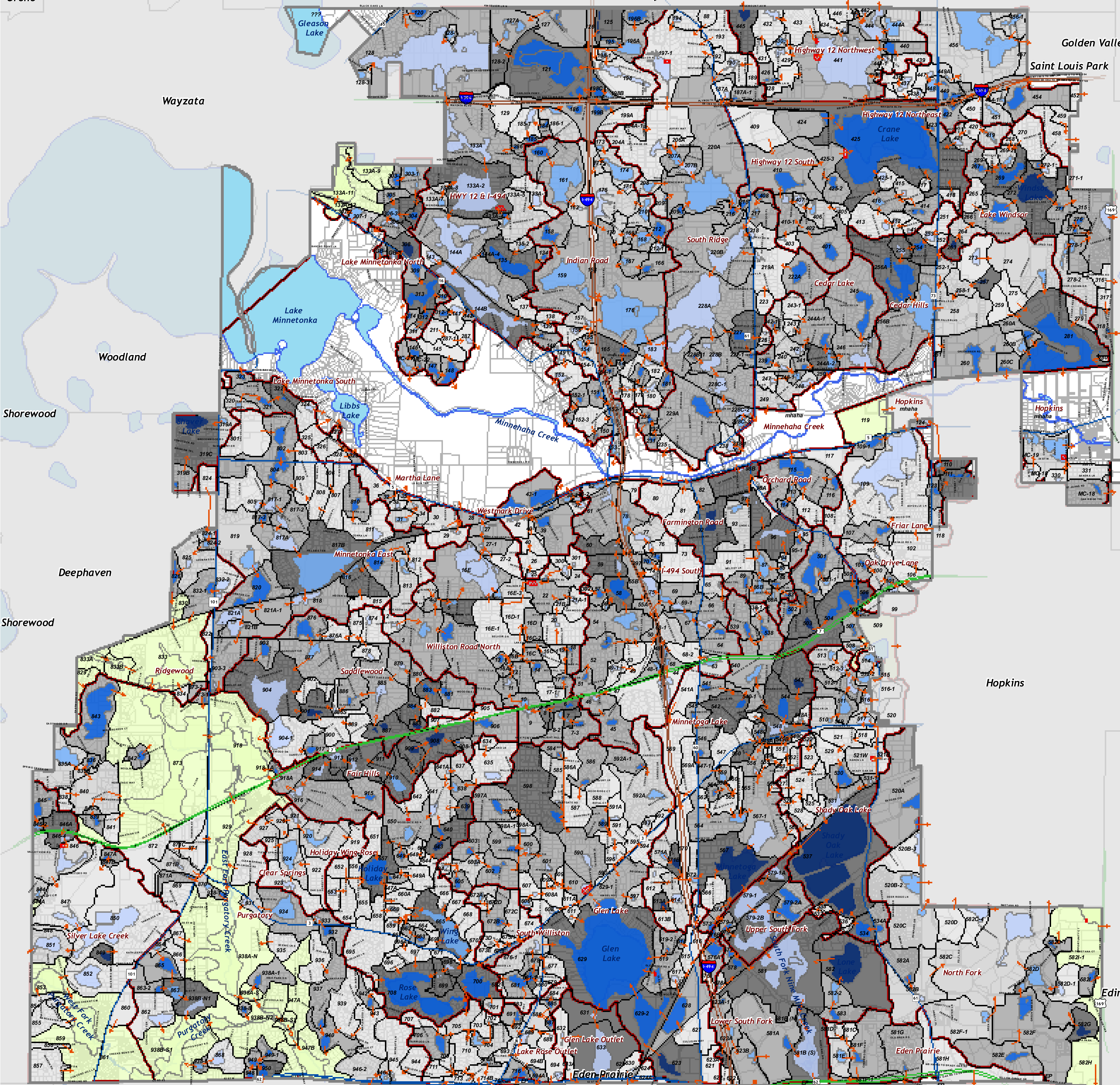
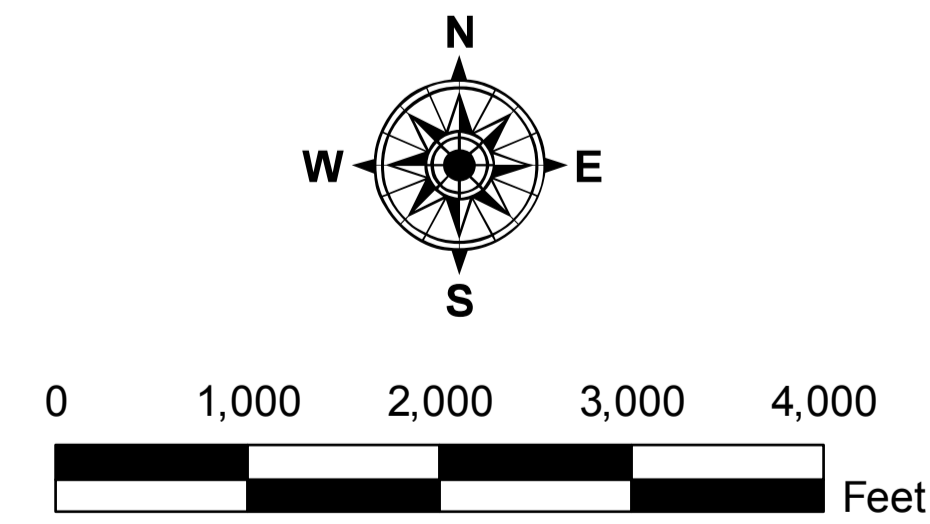


Barr Footer: Date: 12/28/2009 12:07:31 PM File: I:\City\Minnetonka\WRMP_Update_2007\Map\Figures_for_Update\FINAL_Figures_Dec2009\Figure_WaterQualityModeling_34x44.mxd User: jakz



- Flow Direction
- Proposed Sedimentation Ponds
- TP Removal in Water Body**
This number represents the percent of the total annual mass of phosphorus entering the water body that is removed by the water body.
- Not Applicable
- 0 - 25% (Poor/No Treatment)
- 26 - 40% (Moderate Removal)
- 41 - 60% (Good Removal)
- 60 - 100% (Excellent Removal)
- Cumulative TP Removal by Watershed**
This number represents the percent of the total annual mass of phosphorus entering the watershed that is removed in the pond and all upstream ponds.
- Not Applicable
- 0 - 25%
- 26 - 40%
- 41 - 60%
- 60 - 100%
- Subwatersheds
- Drainage Subdistricts
- Municipal Boundary
- Roads**
- Interstates (MN/DOT)
- Trunk Highways (MN/DOT)
- CSAH (Hennepin County)

Source:
Barr Engineering for Watershed Boundary, Flow Direction, and WQ Modeling.
MDNR for Lakes Outside Minnetonka.
MNDOT for Roads Outside Minnetonka.
City of Minnetonka for all other Data.



WATER QUALITY MODELING (PONDNET) RESULTS SUMMARY