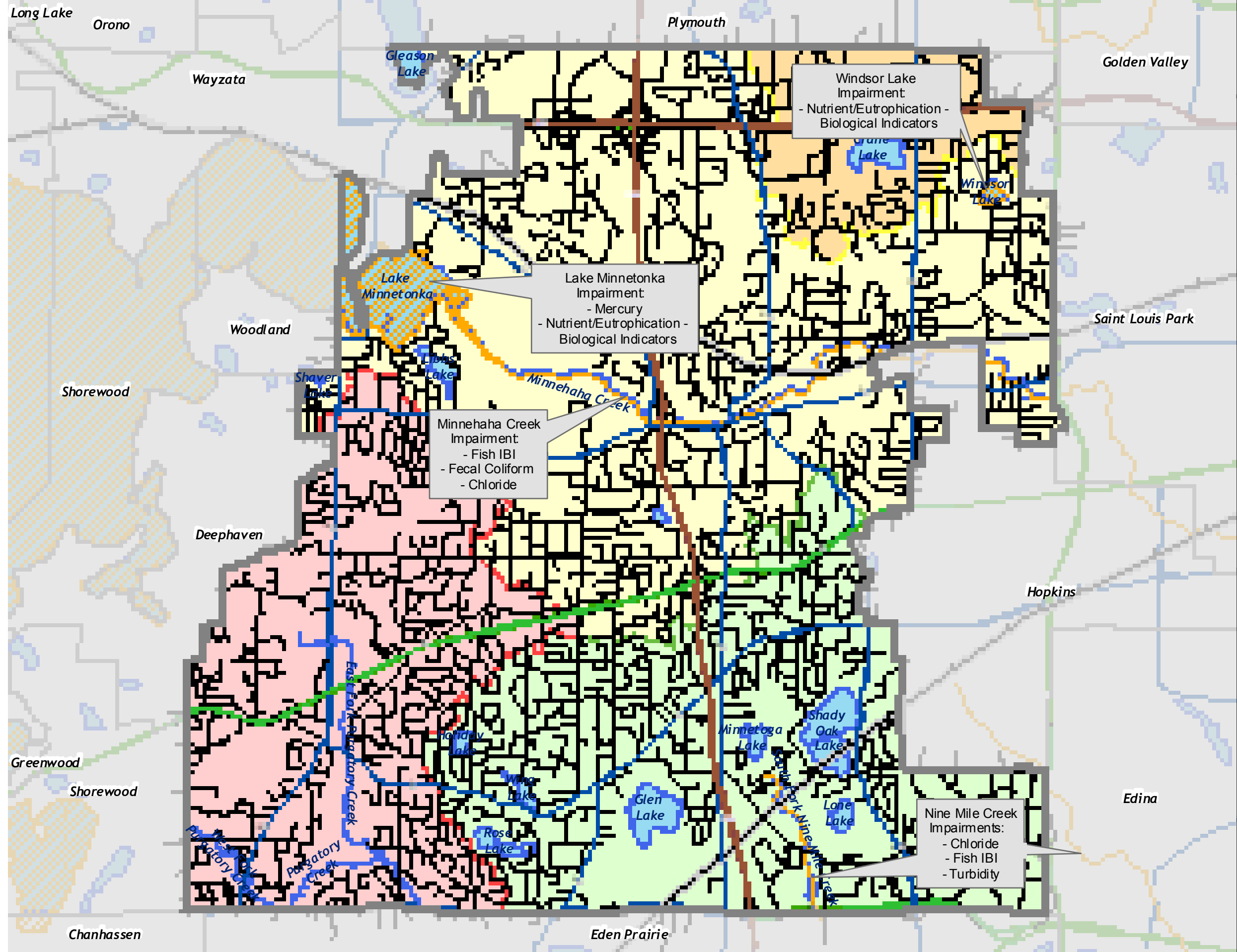
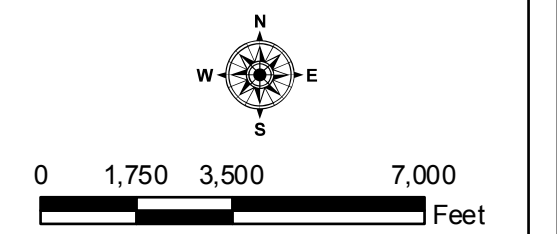


Barr Footer: Date: 12/28/2009 12:01:49 PM File: I:\Client\minnetonka\WR_MP_Up_date_2007\Maps\Figures_for_Update\FINAL_Figures_Dec2009\Figure_3-17.mxd User: jak2



- Impaired Streams
 - Impaired Lakes
 - Municipal Boundary
 - Interstates (MN/DOT)
 - Trunk Highways (MN/DOT)
 - CSAH (Hennepin County)
 - Local Streets
 - Railroad
 - Lakes & Streams
- Watersheds**
- Basset Creek
 - Minnehaha Creek
 - Nine Mile Creek
 - Riley-Purgatory-Bluff Creek

Source: Barr Engineering for Watershed Boundary.
MPCA for 2006 Impaired Waters.
MDNR for Lakes Outside Minnetonka.
MNDOT for Roads Outside Minnetonka.
City of Minnetonka for all other Data.



IMPAIRED WATERS

Map prepared by:
Barr **Figure 3-17**