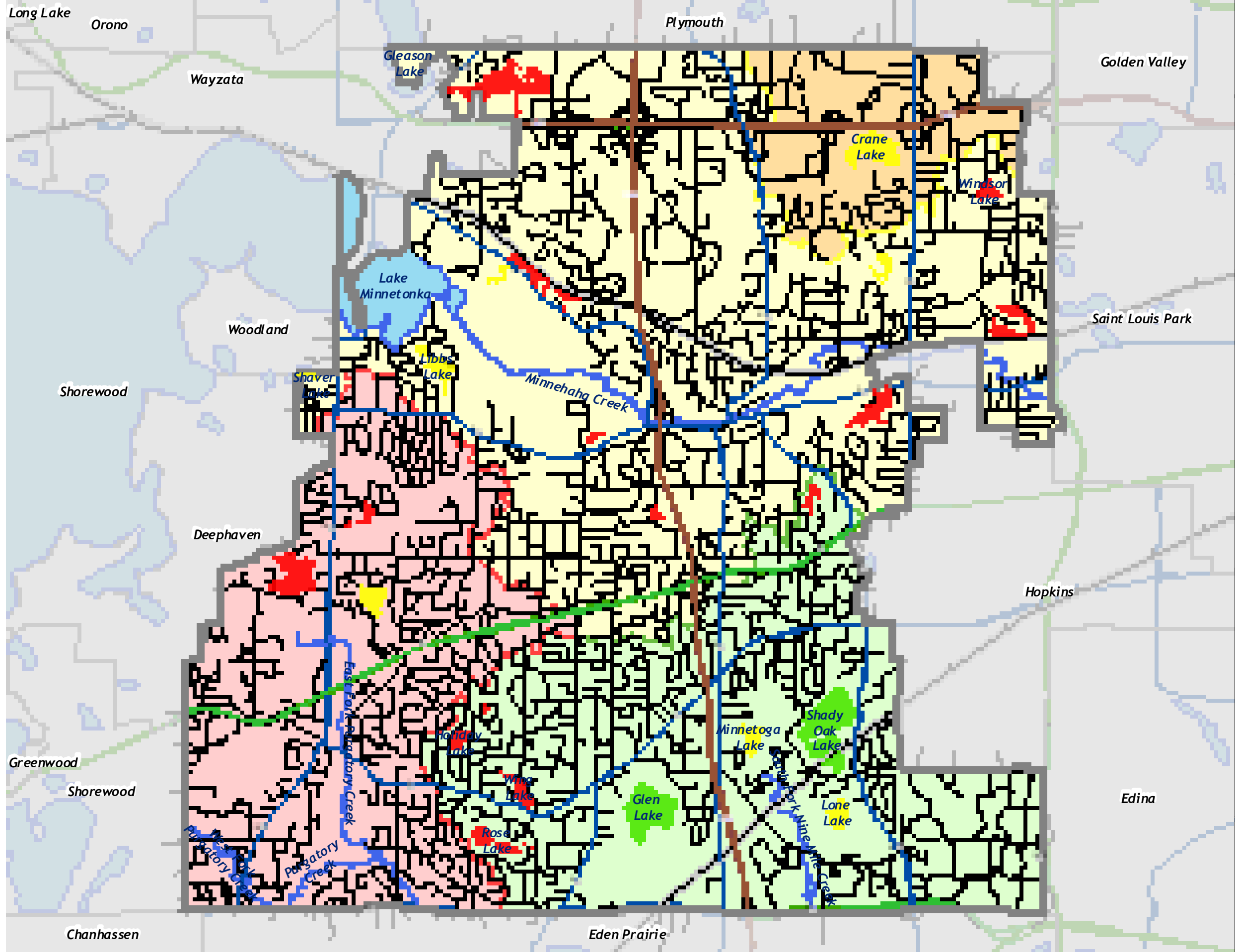


Barr Footer: Date: 12/28/2009 11:57:55 AM File: I:\Client\minnetonka\WQMP_U\pda\p_2007\Maps\Figures_for_Update\FINAL_Figures_D\ec2008\Figure_2005WaterQuality_TP_11x17.mxd User: jak2



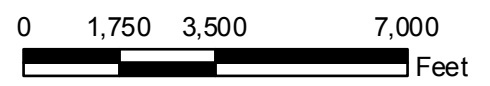
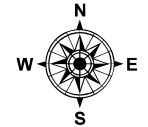
**2003-2005 Water Quality
Summer Average TP Conc.**

- Mesotrophic (TP = 10 - 25 ug/L)
- Eutrophic (TP = 25 - 57 ug/L)
- Hypereutrophic (TP > 57 ug/L)

- Municipal Boundary
- Interstates (MN/DOT)
- Trunk Highways (MN/DOT)
- CSAH (Hennepin County)
- Local Streets
- Railroad
- Lakes & Streams

- Watersheds**
- Bassett Creek
 - Minnehaha Creek
 - Nine Mile Creek
 - Riley-Purgatory-Bluff Creek

Source: Barr Engineering for Watershed Boundary and 2003-2005 Water Quality. MDNR for Lakes Outside Minnetonka. MNDOT for Roads Outside Minnetonka. City of Minnetonka for all other Data.



**2003 - 2005
WATER QUALITY
TOTAL PHOSPHORUS**

Map prepared by:
Barr Figure 3-16