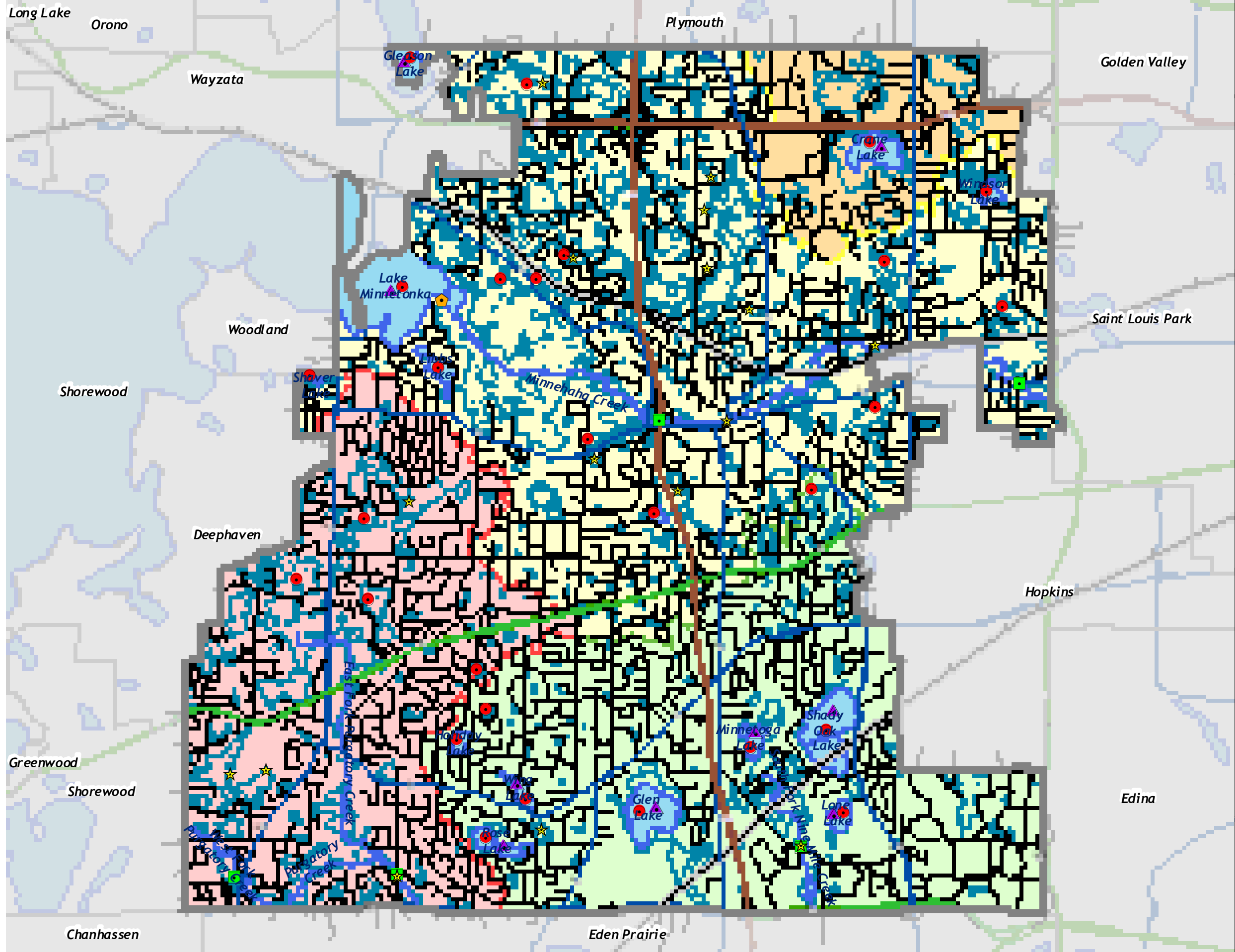


Barr Footer: Date: 12/28/2009 11:48:23 AM File: I:\Client\minnetonka\WQMP\_U\pda\p\_2007\Map\Figures\_for\_Updated\FINAL\_Figures\_D\ec2008\Figure\_MonitoringLocations.mxd User: jak2



**Monitoring Locations**

- ★ Biotic Index
- ▲ Lake Level
- Water Quality
- Water Quality & Flow
- ⬠ Water Quantity

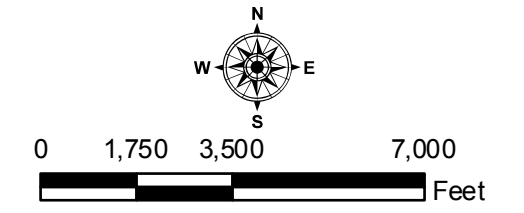
- ▬ Municipal Boundary
- ▬ Interstates (MN/DOT)
- ▬ Trunk Highways (MN/DOT)
- ▬ CSAH (Hennepin County)
- ▬ Local Streets
- ▬ Railroad

- ▬ Lakes & Streams
- ▬ Wetlands

**Watersheds**

- ▬ Bassett Creek
- ▬ Minnehaha Creek
- ▬ Nine Mile Creek
- ▬ Riley-Purgatory-Bluff Creek

Source: Barr Engineering for Drainage District Boundary & Monitoring Locations. MetCouncil for Slopes Data. MDNR for Lakes Outside Minnetonka. MNDOT for Roads Outside Minnetonka. City of Minnetonka for all other Data.



**WATER QUALITY & QUANTITY MONITORING LOCATIONS**

Map prepared by: Barr Figure 3-15