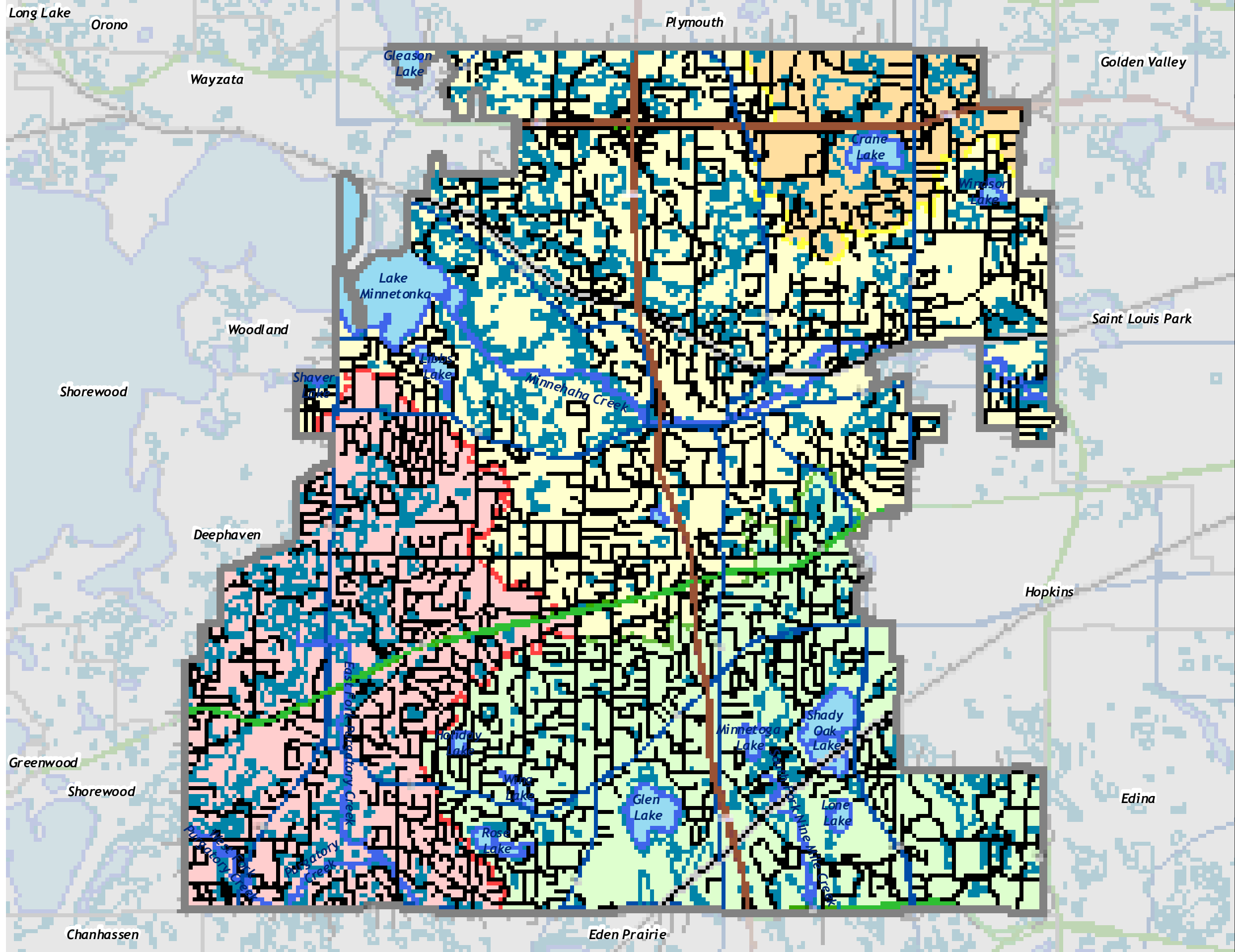
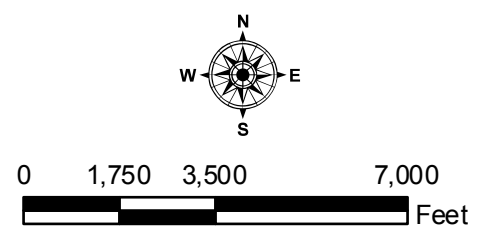


Barr Footer Date: 12/28/2009 11:33:58 AM File: I:\Client\Winneminnoka\WRMP_Update_2007\Map\Figures_for_Update\FINAL_Figures_Dec2009\Figure_NWI_11x17.mxd User: jak2



- NWI Wetlands
 - Municipal Boundary
 - Interstates (MN/DOT)
 - Trunk Highways (MN/DOT)
 - CSAH (Hennepin County)
 - Local Streets
 - Railroad
 - Lakes & Streams
- Watersheds**
- Bassett Creek
 - Minnehaha Creek
 - Nine Mile Creek
 - Riley-Purgatory-Bluff Creek

Source: Barr Engineering for Watershed Boundary.
USFWS for NWI Data.
MNDOT for Roads Outside Minnetonka.
City of Minnetonka for all other Data.



NATIONAL WETLANDS INVENTORY (NWI)

Map prepared by: **Barr** Figure 3-14