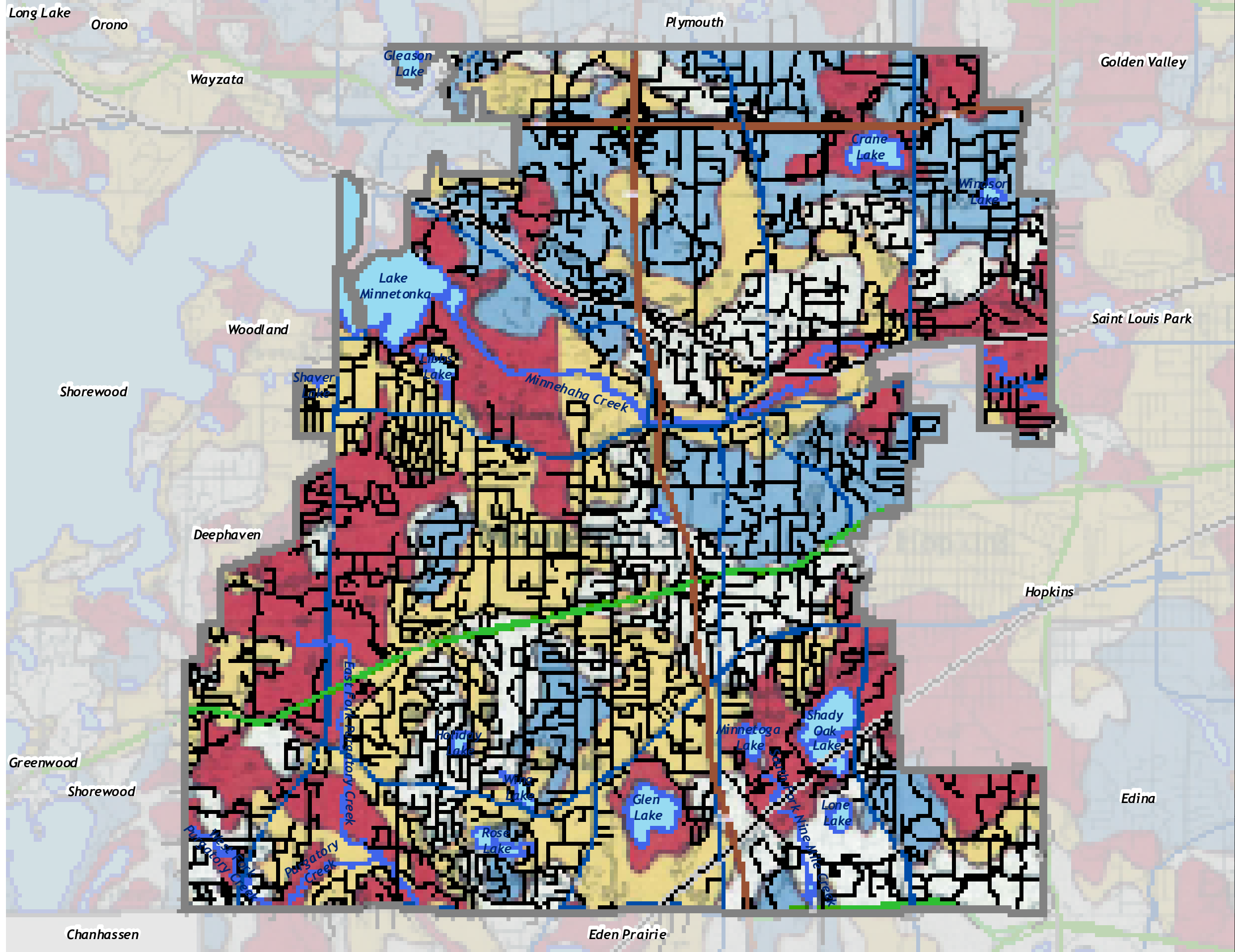


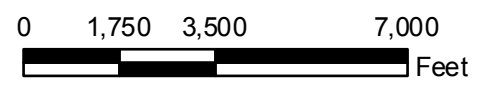
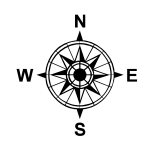
Barr Footer: Date: 12/28/2009 10:41:39 AM File: I:\Client\Minnetonka\WRMP_Update_2007\Maps\FINAL_Figure_s_for_Update\FINAL_Figure_s_Dec2009\Figure_s_GW_Sensitivity_11x17.mxd User: jak2



Groundwater Sensitivity to Pollution

- Very High
- High
- Moderate
- Low
- Municipal Boundary
- Interstates (MN/DOT)
- Trunk Highways (MN/DOT)
- CSAH (Hennepin County)
- Local Streets
- Railroad
- Lakes & Streams

Source: MNGS for Groundwater Sensitivity, MDNR for Lakes Outside Minnetonka, MNDOT for Roads Outside Minnetonka, City of Minnetonka for all other Data.



GROUNDWATER SENSITIVITY TO POLLUTION

Map prepared by: **Barr** **Figure 3-7**