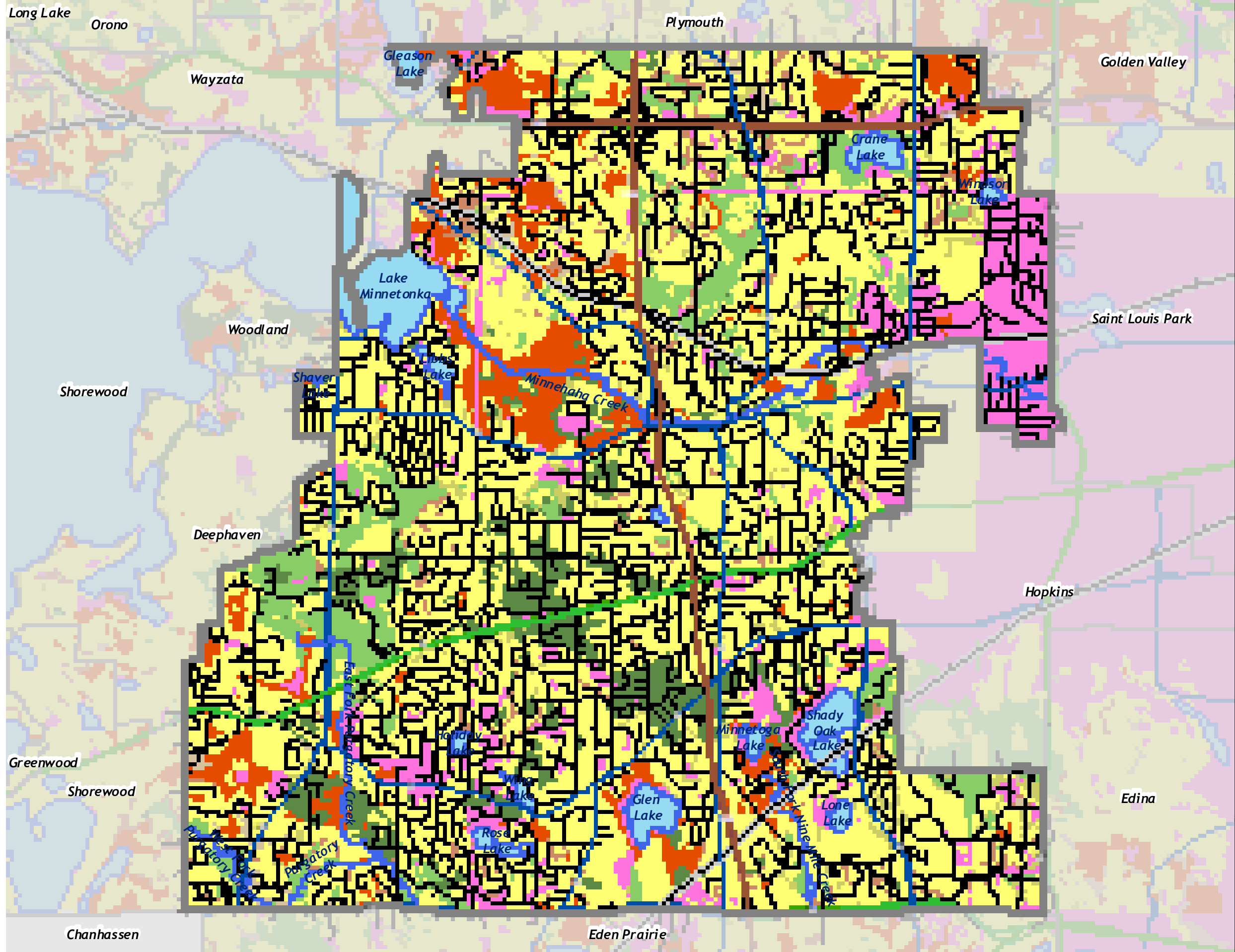
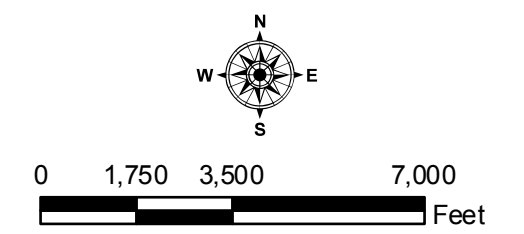


Barr Footer: Date: 12/28/2009 10:25:53 AM File: I:\Client\Minnetonka\WRMP_Update_2007\Maps\FINAL_Figure_s_for_U\pda\FINAL_Figure_s_Dec2009\Figure_s_Soils_11x17.mxd User: ja12



- Hydrologic Soils Group**
- Undefined/Urban Soils
 - A - High Infiltration Rates
 - A/D - If Drained, acts as HSG A
 - B - Moderate Infiltration Rates
 - B/D - If Drained, acts as HSG B
 - C - Slow Infiltration Rates
 - C/D - If Drained, acts as HSG C
 - D - Very Slow Infiltration Rates
- Municipal Boundary
 - Interstates (MN/DOT)
 - Trunk Highways (MN/DOT)
 - CSAH (Hennepin County)
 - Local Streets
 - Railroad
 - Lakes & Streams

Source: MetCouncil for Soils Data. MDNR for Lakes Outside Minnetonka. MNDOT for Roads Outside Minnetonka. City of Minnetonka for all other Data.



HYDROLOGIC SOILS GROUP

Map prepared by: Barr Figure 3-6