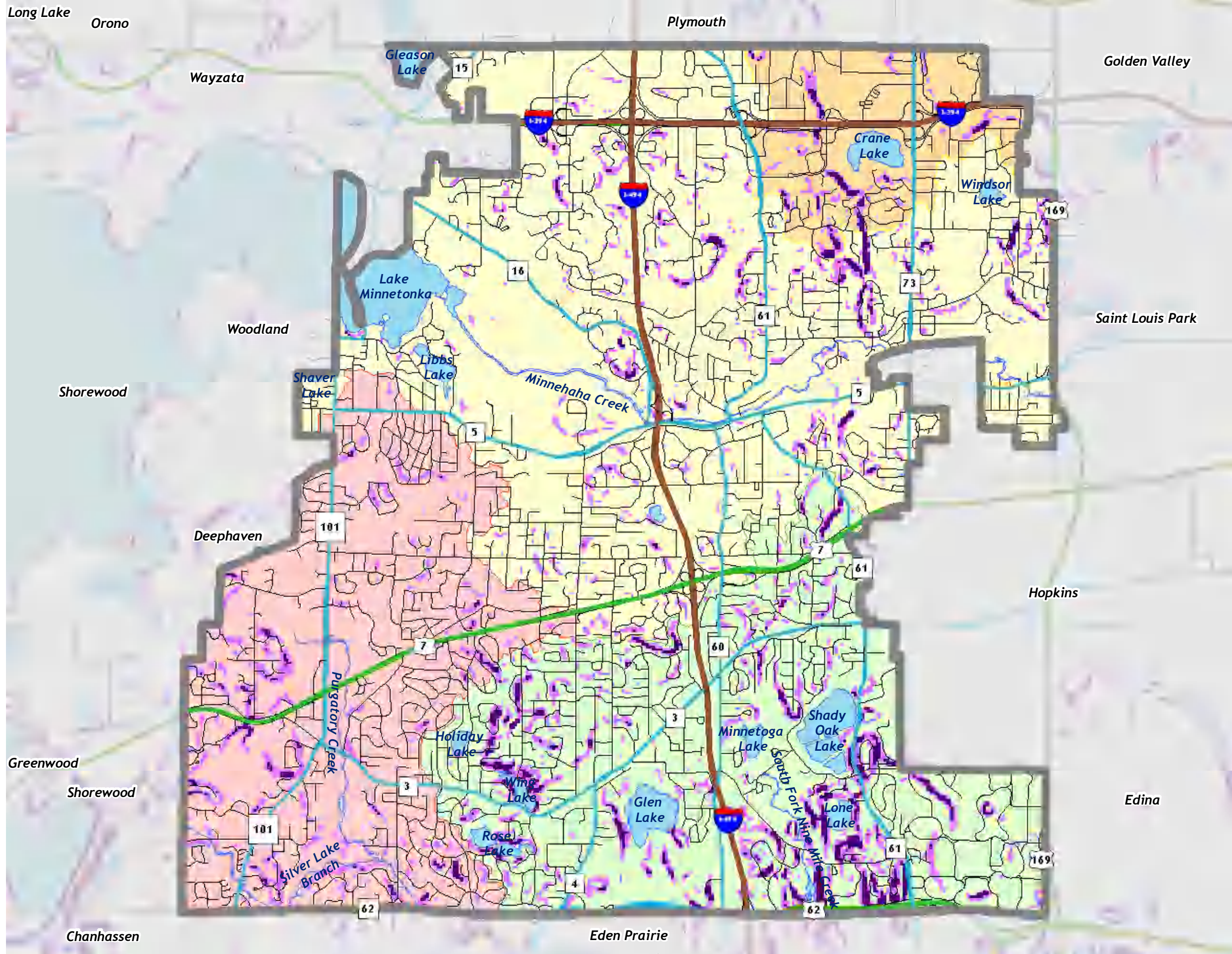
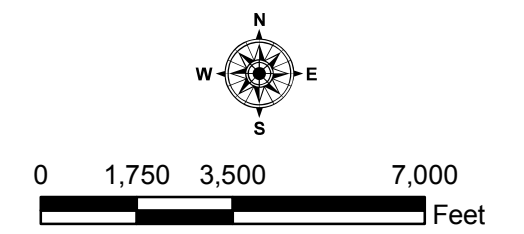


Barr Footer: Date: 8/22/2007 11:25:05 AM File: I:\Client\Minnetonka\WRMP\_Update\_2007\Maps\Figures\_for\_Update\Figure\_SteepSlopes\_11x17.mxd User: jak2



- Steep Slopes**
- 12 - 18 Percent
  - Greater than 18 Percent
- Drainage Districts**
- Bassett Creek
  - Minnehaha Creek
  - Nine Mile Creek
  - Riley-Purgatory-Bluff Creek
- Roads**
- Interstates (MN/DOT)
  - Trunk Highways (MN/DOT)
  - CSAH (Hennepin County)
  - Local Streets
- Other Symbols:**
- Municipal Boundary
  - Lakes & Streams

Barr Engineering for Drainage District Boundary.  
 MetCouncil for Slopes Data.  
 MDNR for Lakes Outside Minnetonka.  
 MNDOT for Roads Outside Minnetonka.  
 City of Minnetonka for all other Data.



### STEEP SLOPES

**DRAFT**

Map prepared by: **BARR** Figure VI-2