

Land Use Definitions

RESIDENTIAL	<p>Low Density (1-4 dwelling units per acre)</p> <ul style="list-style-type: none"> • Single family • Duplex • Attached townhouse 			
	<p>Medium Density (4.1-12 units/acre)</p> <ul style="list-style-type: none"> • Duplex • Townhouse • Small-lot single family • Low-rise multi-family 			
	<p>High Density (12+ units/acre)</p> <ul style="list-style-type: none"> • Multi-story apartment or condominium 			
BUSINESS	<p>Office</p> <ul style="list-style-type: none"> • Professional or other offices • Related Services 			
	<p>Service Commercial</p> <ul style="list-style-type: none"> • Hotels • Health clubs • Theatres 			
	<p>Commercial</p> <ul style="list-style-type: none"> • Retail • Service uses 			
	<p>Industrial</p> <ul style="list-style-type: none"> • Warehouse • Showroom • Manufacturing <p><i>Limited office, retail and service uses are also allowed. Mixed uses, including business parks, governed by master plans</i></p>			

Land Use Definitions

MIXED/MULTIPLE USE

Mixed Use

- One or more uses in a single building or within a planned multi-use area
- Allows flexibility in land use, creative site design
- Can incorporate natural resource protection/enhancement
- Master plans define:
 - specific land uses
 - relationships between uses
 - overall design

Multiple Use

- More than one land use is designated but only one land use may be developed
- Ultimate land use depends on specific criteria (e.g., buffering) being met



PUBLIC/SEMI PUBLIC

Institutional

- Schools
- Religious institutions
- Government buildings
- Multi-purpose complexes



Parks and Open Space

- Designated parks
- Protected open space areas



Roadway Right-of-Way

- Public/private vehicular
- Transit and/or pedestrian



Utility

- Water, gas, sewer, communications

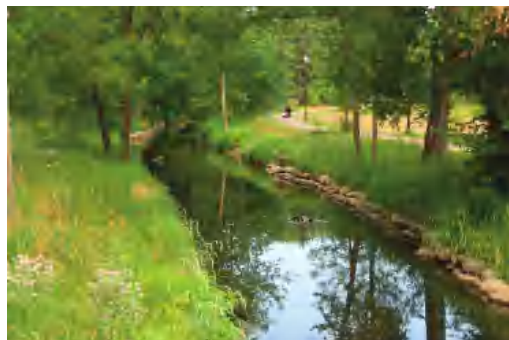
Railroad

- Public/private freight or passenger rail

WATER RESOURCES

Lakes

- Lakes
- Creeks



Wetlands

- Areas designated by city's wetland protection program and maps

Floodplains

- Delineated on Federal Emergency Management Agency (FEMA) maps; sometimes overlap water bodies and wetlands

