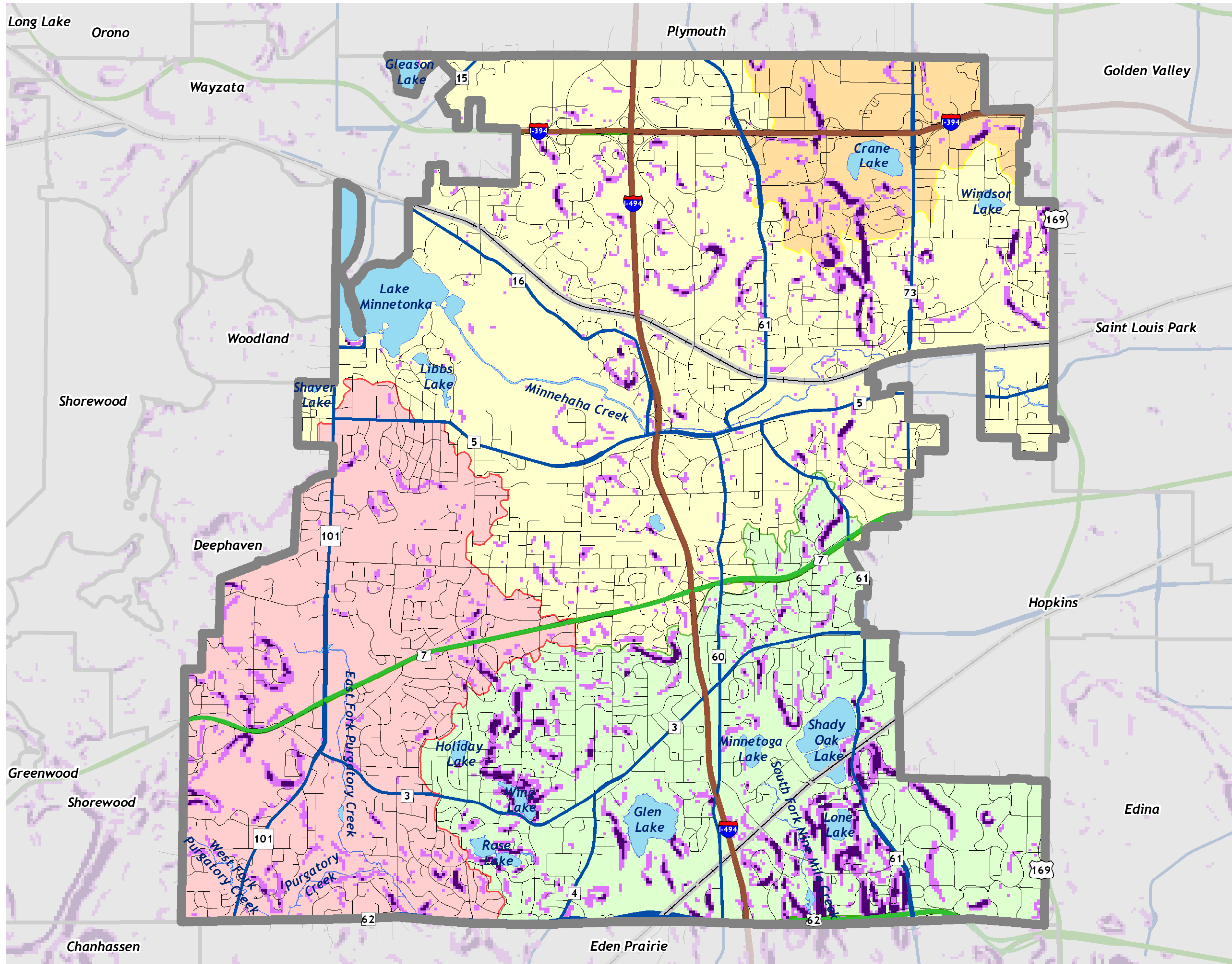


Barr Footer: Date: 4/9/2010 12:00:36 PM File: I:\Client\Minnetonka\WRMP_Update_2007\Maps\Figures_for_Update\CompPlan_Resource\gmt\Plan_Figs_April2010\Figure_VI_2_SteepSlopes.mxd User: jak2



City of
minnetonka
Where quality is our nature

Steep Slopes

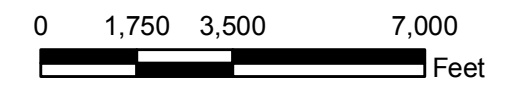
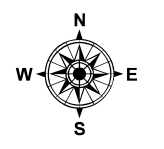
- 12 - 18 Percent
- Greater than 18 Percent

- Municipal Boundary
- Interstates (MN/DOT)
- Trunk Highways (MN/DOT)
- CSAH (Hennepin County)
- Local Streets
- Railroad
- Lakes & Streams

Watersheds

- Bassett Creek
- Minnehaha Creek
- Nine Mile Creek
- Riley-Purgatory-Bluff Creek

Source:
Barr Engineering for Watershed Boundary.
MetCouncil for Slopes.
MNDOT for Roads Outside Minnetonka.
City of Minnetonka for all other Data.



STEEP SLOPES

Map prepared by:
Barr

Figure VI-2